

The design and concept of the monument focuses on the symbolism by utilizing building materials that are indicative to the construction of the Transcontinental Railroad.

We can't do this without your support on this ambitious project to cover the cost of the construction, installation, maintenance, and future projects and programs to honor these forgotten and unsung heroes can matriculate. All donations are tax-deductible.

CHINESE RAILROAD WORKERS DESCENDANTS ASSOCIATION

6



The number six has been selected for its significance to the duration and completion of the railroad as well as an important good luck number for the Chinese people. Hence, the total amount of the building materials is derived from the number six with six layers of material compressed together.

These materials will consist of: two layers each of corten steel, granite, sandstone, bronze, stainless steel along with the plaque.

DONATE

CRWDA.org/Donate

Venmo @NationalJACLCU

Note: For CRWDA

**Check written to CRWDA
can be sent to:**

**National JACL Credit Union
3770 S. Highland Drive
Salt Lake City, UT 84106**

Memo: CRWDA

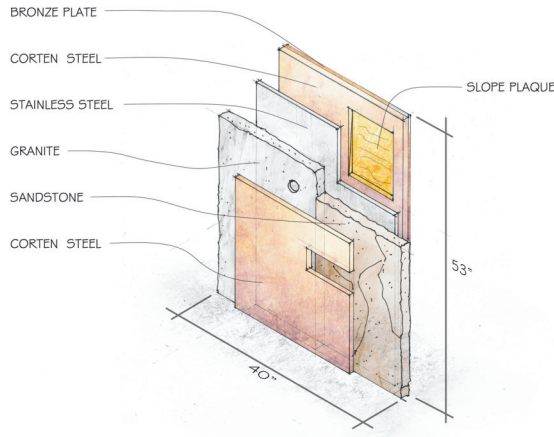


CRWDA is building the first monument in Utah that commemorates the resilience and perseverance of the Chinese railroad workers at the Utah State Capitol

The corten steel is symbolic in representing the rail line and tools that were used by the workers. Additionally, as the corten begins to age, its appearance will alter, symbolizing the history that was left behind by the individuals who partook in the construction of the railroad.

Right behind it are two natural stones: granite & sandstone which represents the Sierra Nevada Mountain where the construction of the railroad took place.

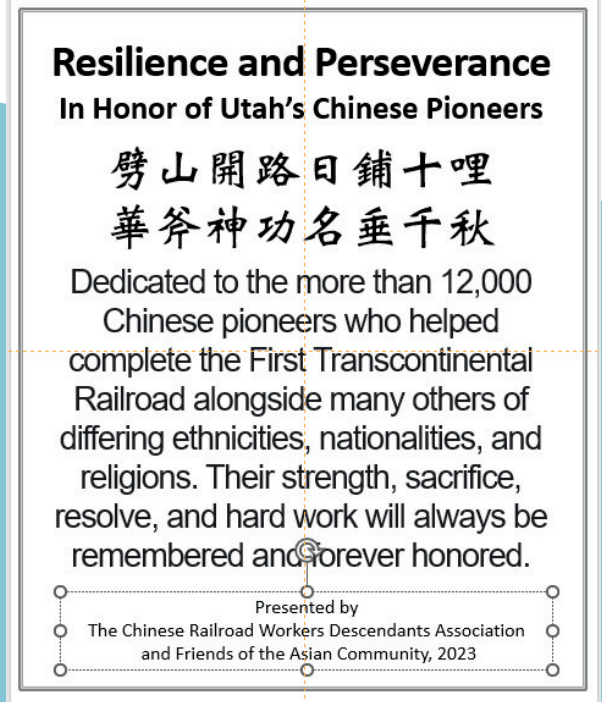
Monument Rendering by Porheang Ear, Architectural Associate at MJSA Architects



Lastly, anchoring all these materials together is stainless steel shaped like the state of Utah. It not only symbolizes the toughness of the individuals who worked on the railroad, but the location of which it was built and completed. A circular opening on the granite will reveal the stainless steel symbolizing the location of this monument - SLC, UT.

All materials will be fastened together by 4 bolts with the stainless-steel acting as the bearing wall by anchoring its L-shape leg into a 6" thick x 12" wide concrete base.

A small plaque will commemorate the actions of the Chinese workers as well as other immigrants, Native Americans, former slaves, Civil War veterans, and members of the Church of Jesus Christ of Latter-Day Saints.



Plaque Design by Porheang Ear, Architectural Associate at MJSA Architects

劈山開路日鋪十哩 華斧神功名垂千秋

*Loose translation:
"Cleave the mountain and carve out a way, Lay [they laid] 10 miles of tracks in one day!*

Chinese railroad workers had superb railroad building skill, May their good reputation and hard work be remembered still (always)"

CRWDA thinks it is important to include Chinese text on the Monument Its inclusion may be the first time a living language other than English has ever been allowed at the Capitol.